

# Ballpark Plaza at Ballpark Way and Brookhollow Plaza Drive Arlington, TX



## AMMENITIES:

- Great access to major highways and roads including Interstate 30, Hwy 360, Lamar Blvd and Ballpark Way
- Within 10 minutes of DFW International Airport and 15 minutes of Arlington Municipal Airport
- Close Proximity (5 minutes drive) to the new Cowboy's Stadium, the Rangers Ballpark and the Arlington Convention Center
- Located within the entertainment district with walking distance to many major hotels and restaurants
- In close proximity to another 2 million square feet of class "A" offices
- Directly across from US Post Office and several banks
- Childcare, library and several city parks within 5 minutes of the development
- Jogging / walking trail on the perimeter of the property, surrounded by lush landscape
- Ample ground parking, well lit
- Outdoor seating areas

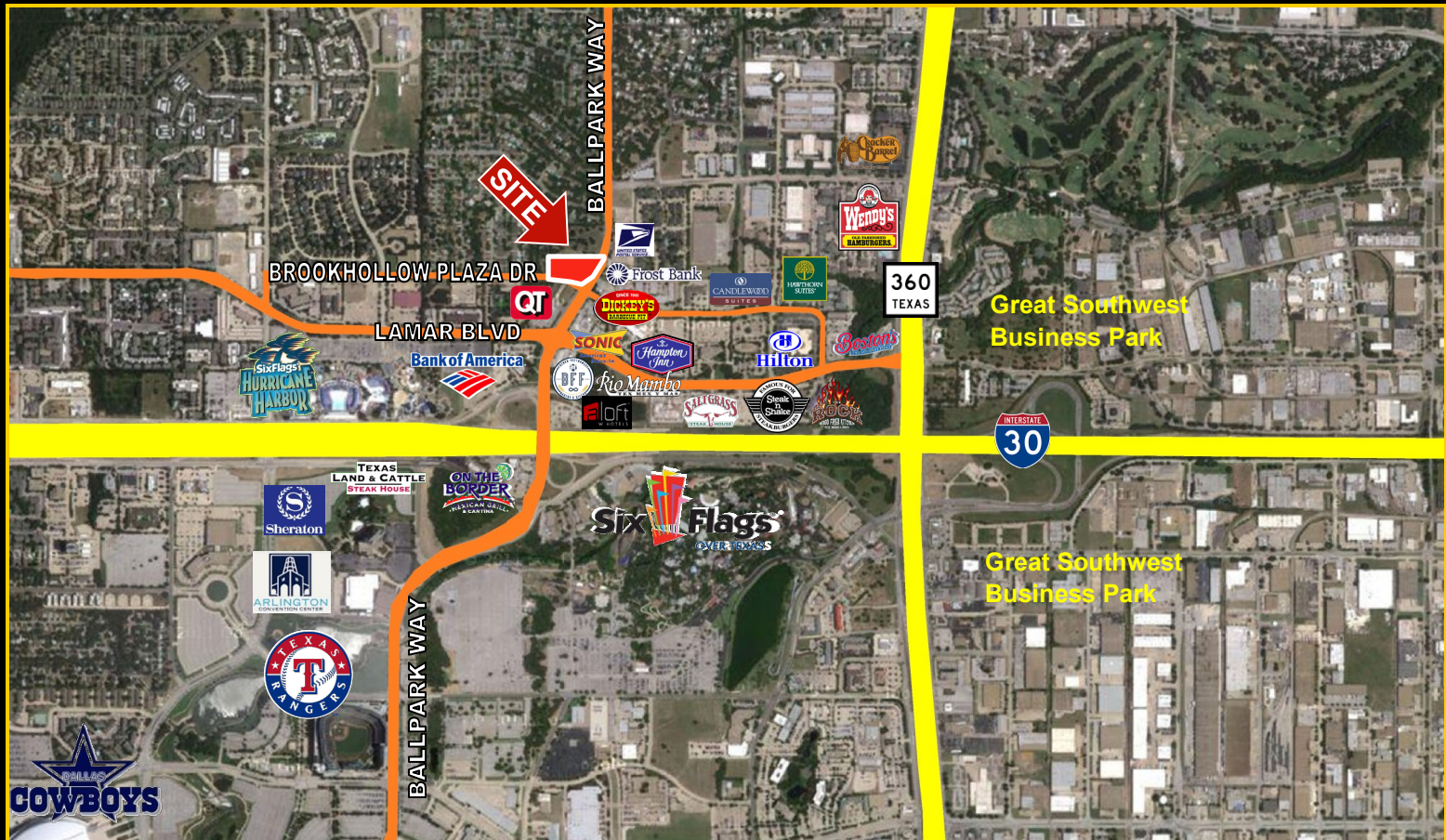
Ballpark Plaza is known as one of the premier office developments located in the prestigious Brookhollow area in North Arlington.

Phase I of this 115,000 square foot planned office development received the **Mayor's Award for "Design Excellence."**

Phase II will accommodate up to 90,000 sf of Class "A" offices.







**LEASING CONTACT:** Mojoy Haddad (817) 395-0111, [mojoy@oakhollowgroup.com](mailto:mojoy@oakhollowgroup.com)